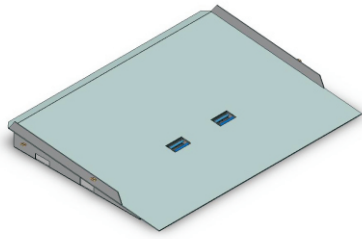


## Type NS-CRS8 Container Ramp



Fast positioning and removal with the NS-CRS 8 ramp. Fitted with fork pockets either side, along with front flip-ups allows placement in confined areas. Securing safety chains both sides for connection of the ramp to the container. Raised side plates prevent the forklift from driving off the side. Full gusseting under eliminates fatigue of the tread plate decking.

### SPECIFICATIONS:

- Size 1.8m Long x 2.32m Wide x 160mm High (ground to ramp deck)
- Structural Capacity 8000kg SWL
- Unit Weight 440kg
- Enamel Paint Finish

Type NS-CRS8 Container Ramp	
<b>Product Price</b>	\$ 3,192.00
<b>Shipping Price</b>	
Sydney	\$ 65.00
Brisbane	\$ 251.00
Melbourne	\$ 182.00
Adelaide	\$ 325.00
Perth	\$ 423.00
* All Prices are GST exclusive	

