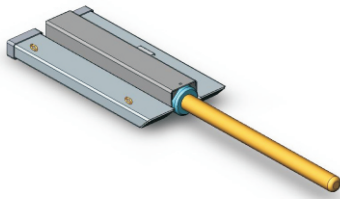


Type NS-RPS2 Slip-On Roll Prong

The type NS-RPS2 Slip-On Roll Prong is suitable for fabric, cable and coil products. Although this Roll Prong can be used for carpet handling, usage is generally restricted to larger Forklifts due to the extended load centre created by the length of the tines.

These attachments quickly adapt to almost any Forklift requiring only the connection of the Safety Chain to prevent unintentional disengagement. Prongs are manufactured from high tensile steel and can be made to any length.

The Safe Working Load (SWL) of this unit varies depending on Prong chosen.



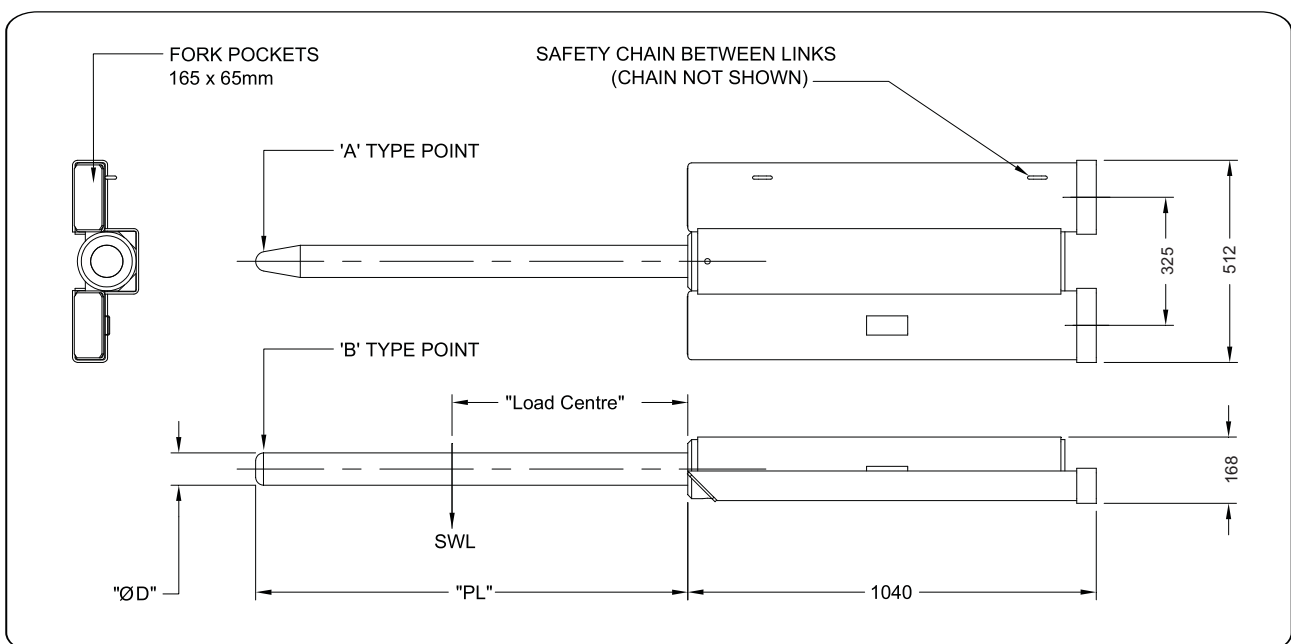
(NS-RPS2 with Ø82mm x 1200mm long Prong shown)

SPECIFICATIONS:

- Safe Working Load (SWL) – refer chart below
- Unit Weight – refer chart below
- Two point types available
- Standard finish – painted enamel
- Refer diagram below for all other specifications

Type NS-RPS2 Slip-On Roll Prong		Shipping Price				
Model Nos	Product Price	Sydney	Brisbane	Melbourne	Adelaide	Perth
NS-RPS-2N-40-1200	\$ 1,796.00	\$ 65.00	\$ 83.00	\$ 69.00	\$ 99.00	\$ 119.00
NS-RPS-2N-50-1800	\$ 1,808.00	\$ 65.00	\$ 90.00	\$ 74.00	\$ 108.00	\$ 132.00
NS-RPS-2N-60-2800	\$ 1,816.00	\$ 65.00	\$ 107.00	\$ 85.00	\$ 131.00	\$ 162.00
NS-RPS-2N-70-2800	\$ 1,884.00	\$ 65.00	\$ 118.00	\$ 92.00	\$ 145.00	\$ 181.00
NS-RPS-2N-80-2800	\$ 1,936.00	\$ 65.00	\$ 133.00	\$ 103.00	\$ 166.00	\$ 208.00
NS-RPS-3N-100-2800	\$ 2,664.00	\$ 65.00	\$ 197.00	\$ 146.00	\$ 253.00	\$ 325.00

*All prices are GST exclusive

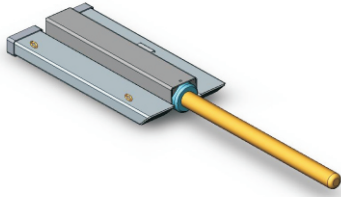


Type RPS2 Slip-On Roll Prong

The type NS-RPS2 Slip-On Roll Prong is suitable for fabric, cable and coil products. Although this Roll Prong can be used for carpet handling, usage is generally restricted to larger Forklifts due to the extended load centre created by the length of the tines.

These attachments quickly adapt to almost any Forklift requiring only the connection of the Safety Chain to prevent unintentional disengagement. Prongs are manufactured from high tensile steel and can be made to any length.

The Safe Working Load (SWL) of this unit varies depending on Prong chosen.



(NS-RPS2 with Ø82mm x 1200mm long Prong shown)

SPECIFICATIONS:

- Safe Working Load (SWL) – refer chart below
- Unit Weight – refer chart below
- Two point types available
- Standard finish – painted enamel
- Refer diagram below for all other specifications

