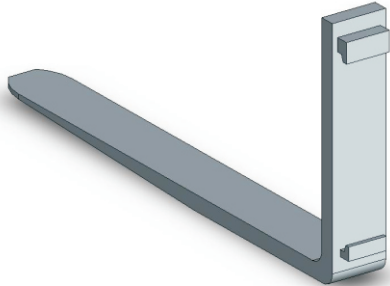


Type NS-FA Fork Arms

NS-Fork Arms (or NS-Forklift Tines) supplied by National Sales have been designed in accordance with AS2359.1.

Random testing has been carried out in accordance with AS2359.1 Clause 6.5.



Fork Arms are supplied in a range of capacities and lengths. Always ensure that the rating of the Fork Arm is equal to or exceeds the rated lift capacity of the fork truck. The fitting of Fork Arms with a lower rating than the forklift truck could lead to failure, resulting in injury or death.

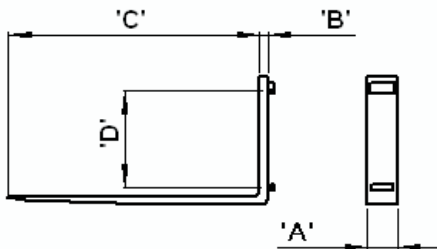
When ordering Fork Arms ensure correct parts are ordered (refer table below).

E.g. Type NS-FA25-107 = Fork Arm 2.5 tonne SWL/ pair at 600mm load centre x 1070mm blade length.

Type NS-FA Fork Arms		Shipping Price				
Model Nos	Product Price	Sydney	Brisbane	Melbourne	Adelaide	Perth
NS-FA15-107	\$ 336.00	\$ 65.00	\$ 76.00	\$ 64.00	\$ 89.00	\$ 106.00
NS-FA15-120	\$ 360.00	\$ 65.00	\$ 78.00	\$ 65.00	\$ 91.00	\$ 109.00
NS-FA25-107	\$ 428.00	\$ 65.00	\$ 88.00	\$ 72.00	\$ 104.00	\$ 127.00
NS-FA25-120	\$ 456.00	\$ 65.00	\$ 91.00	\$ 74.00	\$ 110.00	\$ 134.00
NS-FA30-107	\$ 520.00	\$ 65.00	\$ 97.00	\$ 78.00	\$ 117.00	\$ 144.00
NS-FA30-120	\$ 588.00	\$ 65.00	\$ 103.00	\$ 82.00	\$ 125.00	\$ 154.00
NS-FA45-107	\$ 528.00	\$ 65.00	\$ 114.00	\$ 90.00	\$ 140.00	\$ 174.00
NS-FA45-120	\$ 708.00	\$ 65.00	\$ 118.00	\$ 93.00	\$ 146.00	\$ 182.00

*All prices are GST exclusive

Type NS-FA Fork Arms



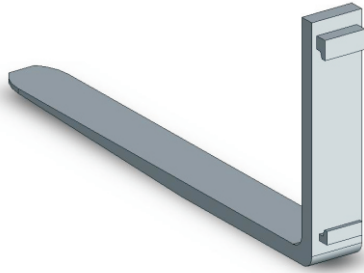
Fork Arms

Tough CrMo high tensile steel
Light Weight, slow wearing
Standard ITA carriage hooks
Other sizes available

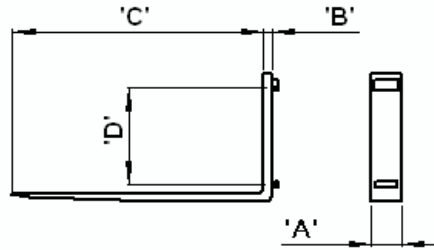
Type	Capacity at 600mm / pair kg	"A" mm	"B" mm	"C" mm	"D" mm	wt/pair kg
NS-FA15-107	1500	100	32	1070	II	72
NS-FA15-120	1500	100	32	1200	II	83
NS-FA25-107	2500	125	35	1070	II	96
NS-FA25-120	2500	125	35	1200	II	107
NS-FA30-107	3000	125	39	1070	III	112
NS-FA30-120	3000	125	39	1200	III	130
NS-FA45-107	4500	125	50	1070	III	154
NS-FA45-120	4500	125	50	1200	III	166

National Sales Pty Ltd

Phone: 1300-795512 Fax: 02 85804677 Website: www.handlinggear.com.au email: sales@handlinggear.com.au
SPECIFICATIONS SUBJECT TO CHANGE WITHOUT NOTICE



Type NS-FA Fork Arms



Type	Capacity at 600mm / pair kg	"A" mm	"B" mm	"C" mm	"D" mm	wt/pair kg
NS-FA15-107	1500	100	32	1070	II	72
NS-FA15-120	1500	100	32	1200	II	83
NS-FA25-107	2500	125	35	1070	II	96
NS-FA25-120	2500	125	35	1200	II	107
NS-FA30-107	3000	125	39	1070	III	112
NS-FA30-120	3000	125	39	1200	III	130
NS-FA45-107	4500	125	50	1070	III	154
NS-FA45-120	4500	125	50	1200	III	166

When fitting Fork Arms ensure that the marking on the Fork Arms is compatible with the forklift rating. Each Fork Arm is stamped on the side with the relevant information. The rating is for an individual Fork Arm and should be doubled to provide a total safe working load. Refer table above and descriptions below for all rating information for each type of Fork Arm available.

Fork Arm Type FA15-107 / 120 Class 2 mounting

Stamped on each Fork Arm – 750 x 600 representing 750kg at 600mm LC
 Combined capacity for the pair = 1500kg at 600mm load centre

Fork Arm Type FA25-107 / 120 Class 2 mounting

Stamped on each Fork Arm – 1250 x 600 representing 1250kg at 600mm LC
 Combined capacity for the pair = 2500kg at 600mm load centre

Fork Arm Type FA30-107 / 120 Class 3 mounting

Stamped on each Fork Arm – 1500 x 600 representing 1500kg at 600mm LC
 Combined capacity for the pair = 3000kg at 600mm load centre

Fork Arm Type FA45-107 / 120 Class 3 mounting

Stamped on each Fork Arm – 2250 x 600 representing 2250kg at 600mm LC
 Combined capacity for the pair = 4500kg at 600mm load centre

National Sales Pty Ltd

Phone: 1300-795512 Fax: 02 85804677 Website: www.handlinggear.com.au email: sales@handlinggear.com.au
 SPECIFICATIONS SUBJECT TO CHANGE WITHOUT NOTICE