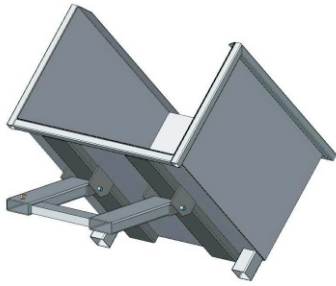


## Type NS-FBT-M Forward Bin Tipper



The type NS-FBT-M Forward Bin Tipper is manufactured to suit Bin dimensions as specified by the Customer. The Bin Tipper is designed as a Forklift slip-on attachment able to be rotated 180° without the Forklift Operator leaving the drivers seat. A Safety Chain prevents the Unit from disengagement from the fork arms. Bins can be safely transported about the work site and emptied quickly where required.

The standard finish on the Bin Tipper is either painted enamel or hot-dipped galvanised.

### SPECIFICATIONS:

- Safe Working Load (SWL) 1500kg
- Pocket Size 165 x 65
- Pocket Centres 635mm (Standard)  
(All other specifications determined by design)

Type NS-FBT-M Forward Bin Tipper		
Product Price :	Painted	\$2,588.00
	Galvanized	\$2,788.00
Shipping Price		
Sydney		\$65.00
Brisbane		\$213.00
Melbourne		\$156.00
Adelaide		\$273.00
Perth		\$431.00
*All prices are GST exclusive		

