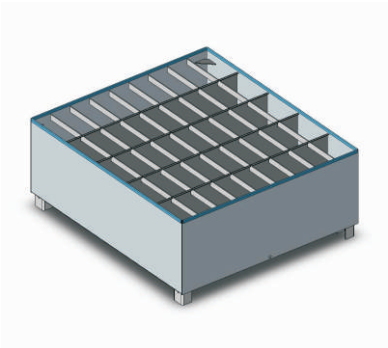


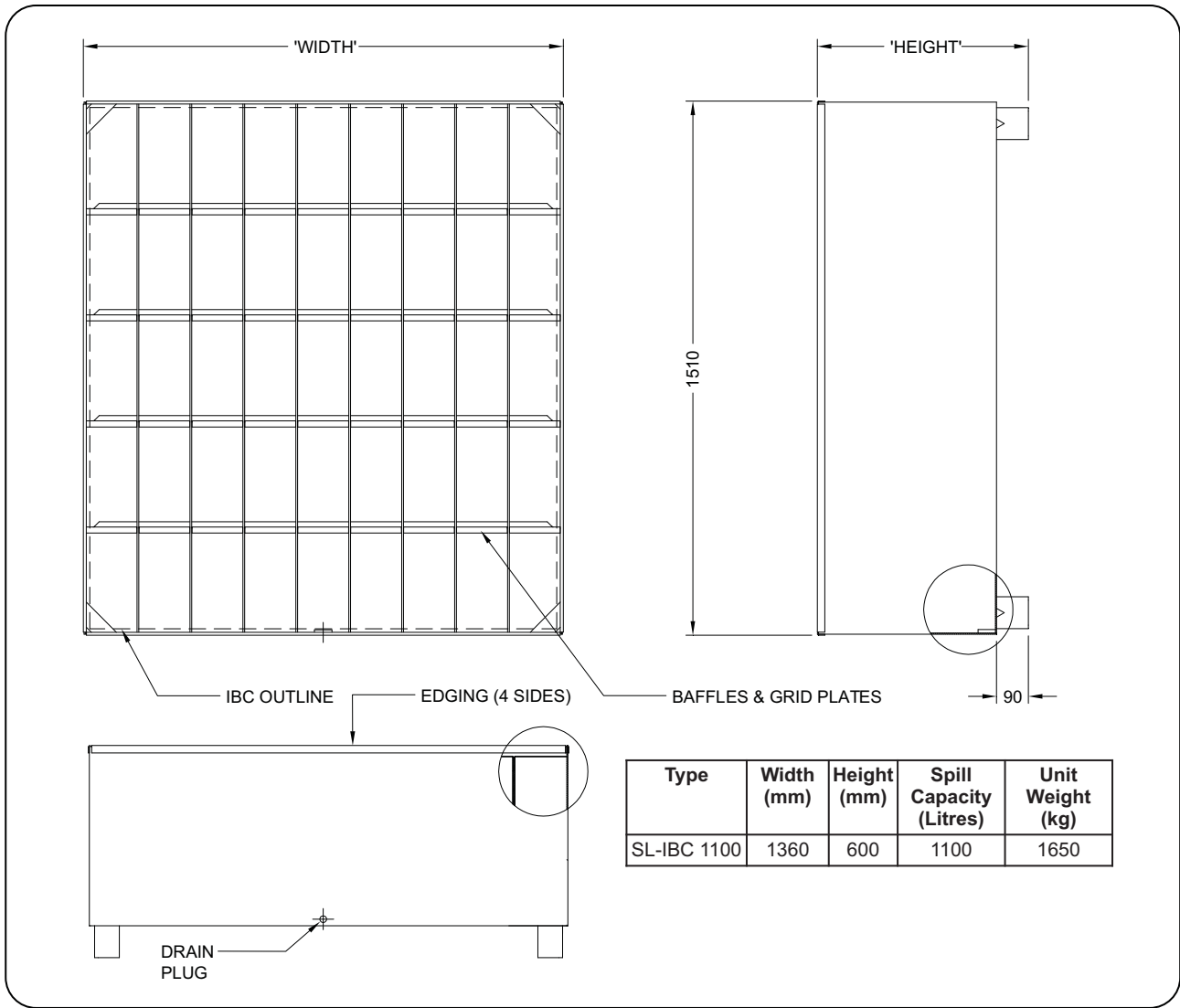
Type NS-SL-IBC-1100 Spill Bin

The type NS-SL range of Spill Bins offers a complete protection against damaging and costly chemical spills. The type SL-IBC Spill Bin has been specifically designed to suit the 1000 litre Intermediate Bulk Container (IBC) and with close spacing support bars, has a Safe Working Load of 2000kg. To empty the containment area, a single Drain Plug has been provided at the front of the Spill Bin. All type NS-SL Spill Bins come in a hot-dipped Galvanised finish.



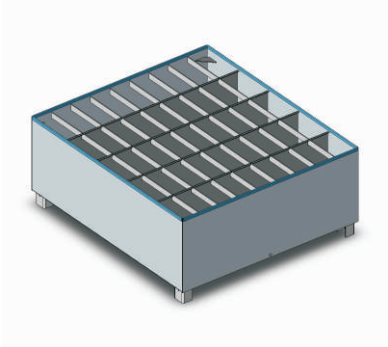
The type NS-SL-IBC Spill Bin has a spill capacity of 1100 litres (110% of the IBC holding capacity) in accordance with Australian Standards, being classified as a "portable" unit.

For all other specifications refer to the diagram & chart below.



Type NS-SL-IBC-1350 Spill Bin

The type NS-SL range of Spill Bins offers a complete protection against damaging and costly chemical spills. The type SL-IBC Spill Bin has been specifically designed to suit the 1000 litre Intermediate Bulk Container (IBC) and with close spacing support bars, has a Safe Working Load of 2000kg. To empty the containment area, a single Drain Plug has been provided at the front of the Spill Bin. All type NS-SL Spill Bins come in a hot-dipped Galvanised finish.



The type NS-SL-IBC Spill Bin has a spill capacity of 1100 litres (110% of the IBC holding capacity) in accordance with Australian Standards, being classified as a "portable" unit.

For all other specifications refer to the diagram & chart below.

