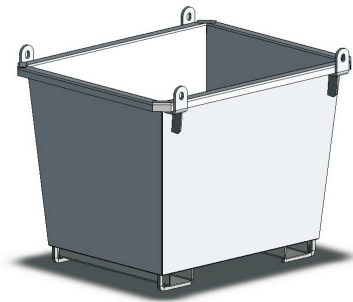


## Type NS-SCB-112 Stackable Crane Bin

The types NS-SCB-112 Stackable Crane Bin has been designed with space saving contours to allow the bins to interlock for transport and storage and is suitable for all waste products. All bins are fitted with 2-way entry fork pockets allowing emptying by rotating Forklift, or positive handling on uneven ground. 4 Crane Lugs are fitted along with upending lugs for Crane emptying.



(Type NS-SCB 215 standard model shown)

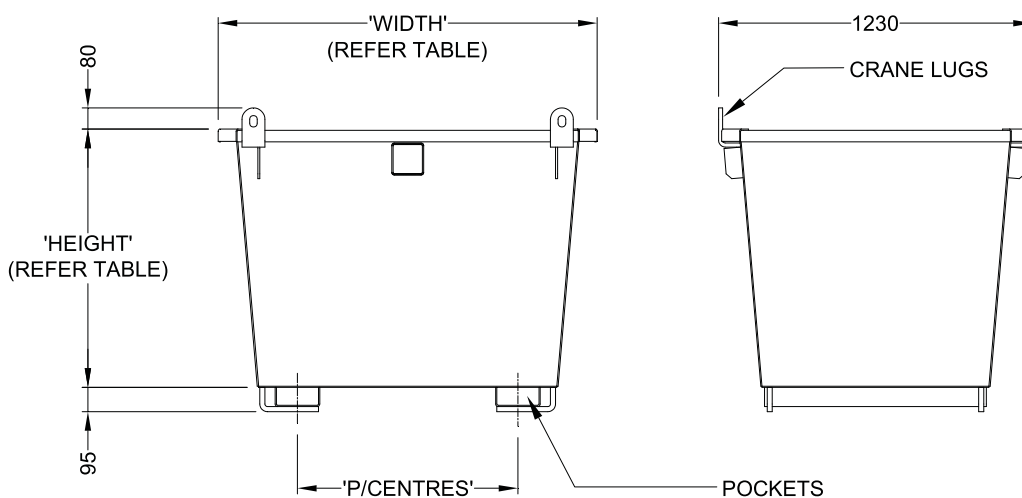
The type NS-SCB bins are available with either a Safe Working Load of 1000kg (made from 3mm sheet), or with a Safe Working Load of 2000kg (made from 5mm plate), and range in sizes from 0.75 – 1.80 cubic metre capacities. These bins are available in either enamel painted over primed steel or H.D. Galvanised finish.

### SPECIFICATIONS:

- Pocket size 165 x 70mm
- Pocket Centres – refer Table
- Safe Working Load – refer Table
- Unit Weight – refer Table
- Volume Capacity – refer Table
- HCG 600mm

### OPTIONS:

- 4-way Pockets, Wheels, Lid
- Drain Valve & Strainer



BIN CAPACITY	CAPACITY	SWL	HEIGHT	WIDTH	P/CENTRES	UNIT WEIGHT
NS-SCB-112	0.75 cu m	1000kg	800mm	1190mm	585mm	150kg