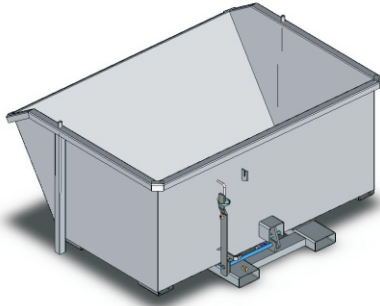


Type NS-TU6 Heavy Duty Tip-Up Bin

The type NS-TU6 Heavy Duty Tip-Up Bin has been manufactured from 3mm plate and designed with a low profile to allow versatility in confined spaces. The pouring lip and smooth formed edges make the bin ideal for all food industry applications. The release mechanism is activated by the Forklift operator pulling the pull chord from the driver's seat. The custom built shock absorber prevents impact forces being transmitted to the Forklift during emptying.

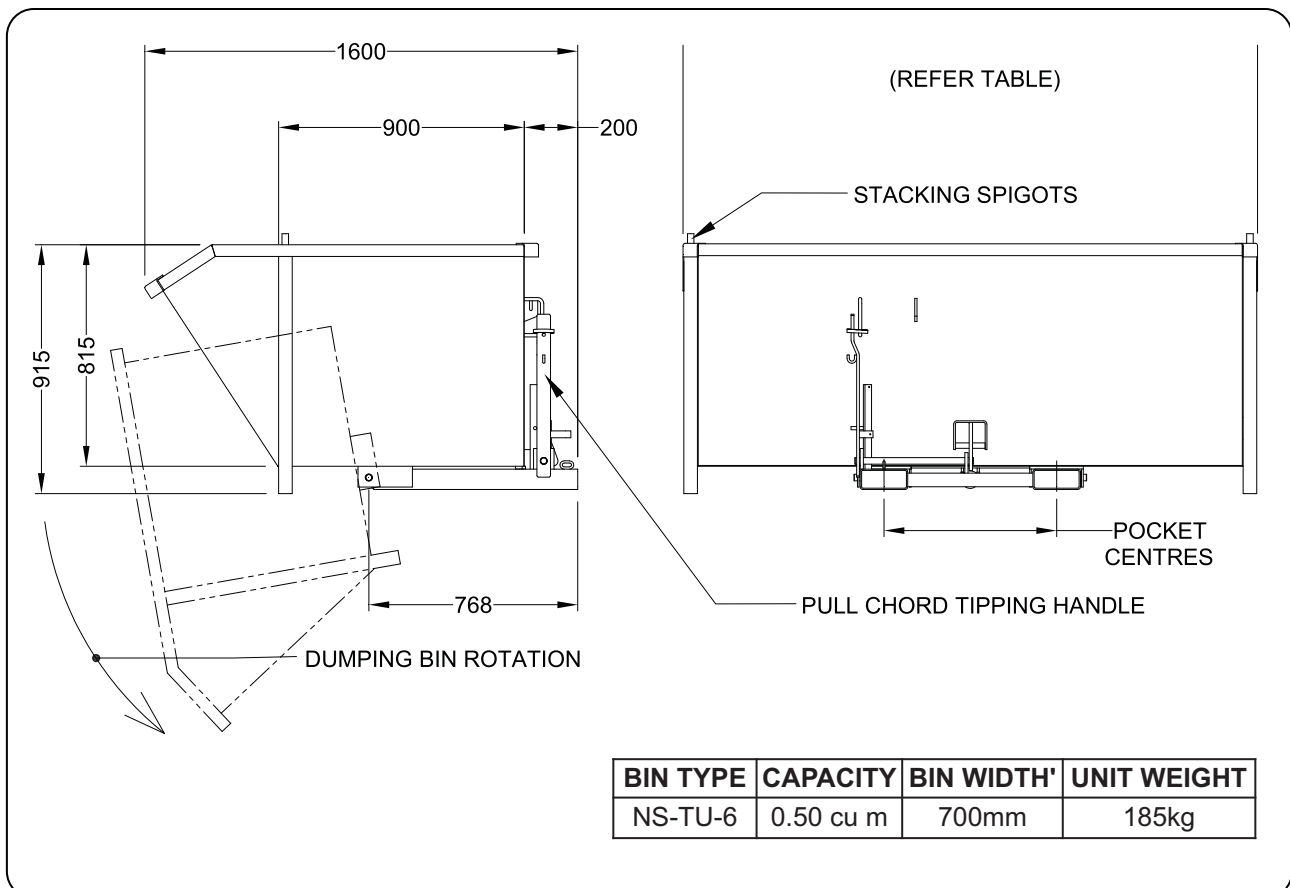


(Type NS-TU6 standard model shown)
Refer 'NS-TU_WL_Sales' Product Specification sheet
for Wheels & Crane Lug options.

All type NS-TU bins have a Safe Working Load of 1000kg and range in sizes from 0.5 – 1.5 cubic metre capacities. These bins are available in either enamel painted over primed steel or H.D. Galvanised finish.

SPECIFICATIONS:

- Pocket size 165 x 65mm
- Pocket Centres – 635mm (TU6 – 405mm)
- Safe Working Load 1000kg
- Unit Weight – refer Table
- Volume Capacity – refer Table
- HCG 800mm
- VCG 400mm
- Crane Lugs, Wheels & Lid Optional
- Drain Valve & Strainer Optional
- Hydraulic Option available

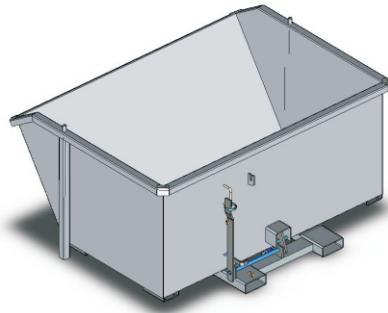


BIN TYPE	CAPACITY	BIN WIDTH'	UNIT WEIGHT
NS-TU-6	0.50 cu m	700mm	185kg

Type NS-TU9 Heavy Duty Tip-Up Bin

The type NS-TU9 Heavy Duty Tip-Up Bin has been manufactured from 3mm plate and designed with a low profile to allow versatility in confined spaces. The pouring lip and smooth formed edges make the bin ideal for all food industry applications. The release mechanism is activated by the Forklift operator pulling the pull chord from the driver's seat. The custom built shock absorber prevents impact forces being transmitted to the Forklift during emptying.

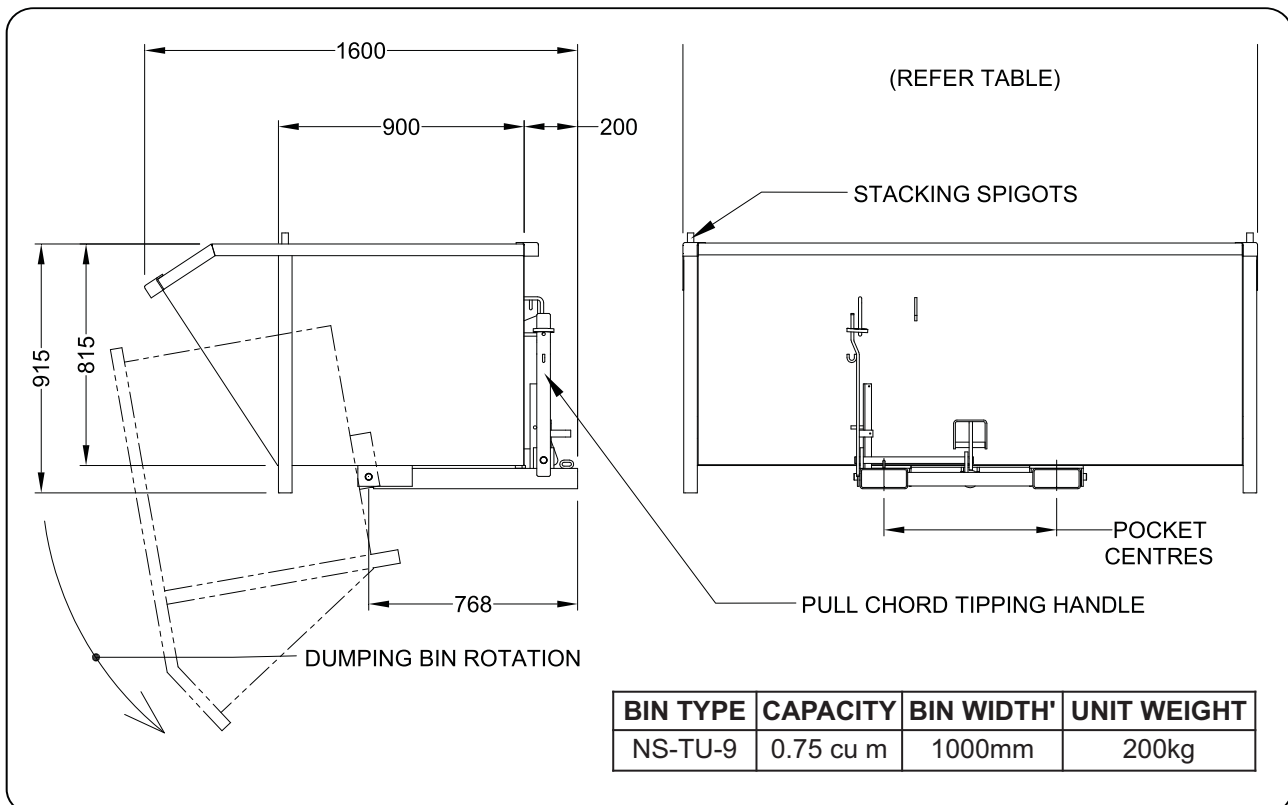
All type NS-TU bins have a Safe Working Load of 1000kg and range in sizes from 0.5 – 1.5 cubic metre capacities. These bins are available in either enamel painted over primed steel or H.D. Galvanised finish.



(Type NS-TU9 standard model shown)
Refer 'NS-TU_WL_Sales' Product Specification sheet for Wheels & Crane Lug options.

SPECIFICATIONS:

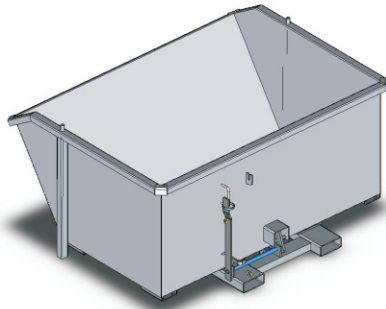
- Pocket size 165 x 65mm
- Pocket Centres – 635mm
- Safe Working Load 1000kg
- Unit Weight – 200kg
- Volume Capacity – 0.75cu m
- HCG 800mm
- VCG 400mm
- Crane Lugs, Wheels & Lid Optional
- Drain Valve & Strainer Optional
- Hydraulic Option available



Type NS-TU9 Heavy Duty Tip-Up Bin

The type NS-TU9 Heavy Duty Tip-Up Bin has been manufactured from 3mm plate and designed with a low profile to allow versatility in confined spaces. The pouring lip and smooth formed edges make the bin ideal for all food industry applications. The release mechanism is activated by the Forklift operator pulling the pull chord from the driver's seat. The custom built shock absorber prevents impact forces being transmitted to the Forklift during emptying.

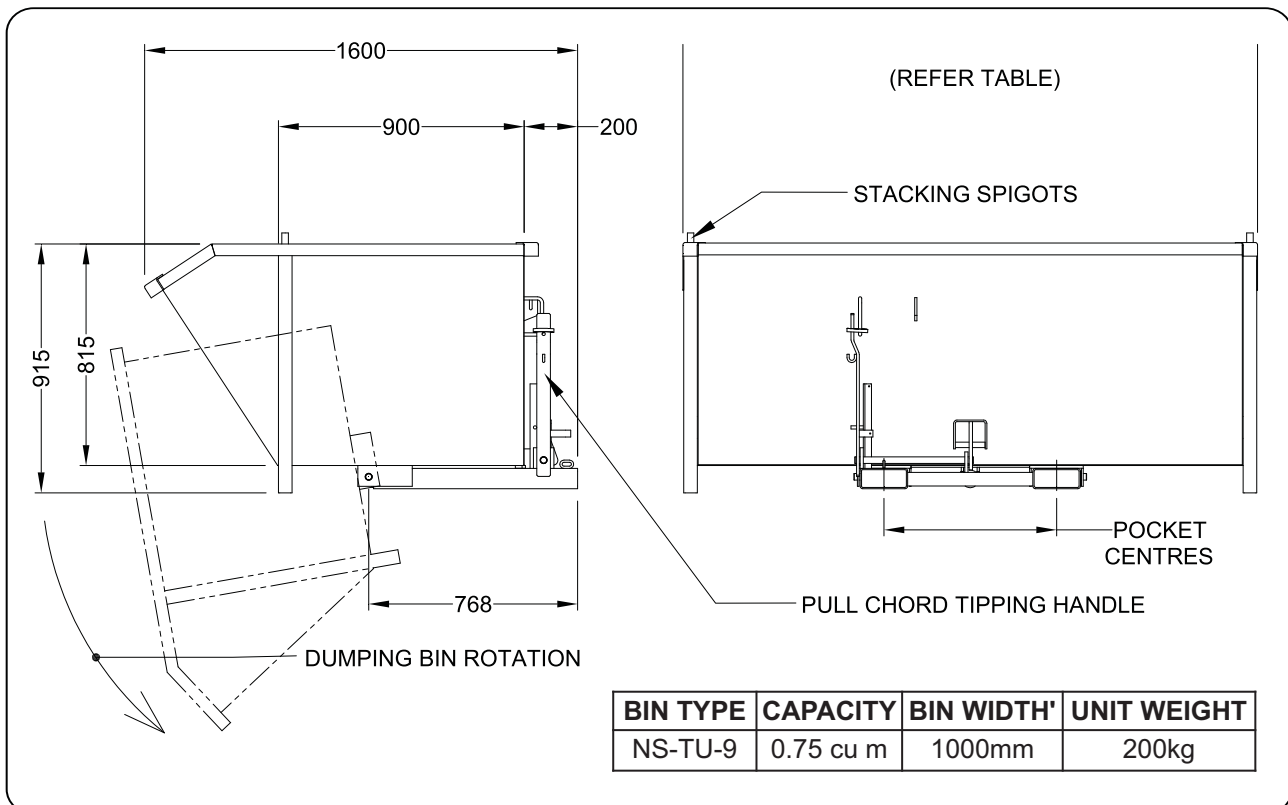
All type NS-TU bins have a Safe Working Load of 1000kg and range in sizes from 0.5 – 1.5 cubic metre capacities. These bins are available in either enamel painted over primed steel or H.D. Galvanised finish.



(Type NS-TU9 standard model shown)
Refer 'NS-TU_WL_Sales' Product Specification sheet
for Wheels & Crane Lug options.

SPECIFICATIONS:

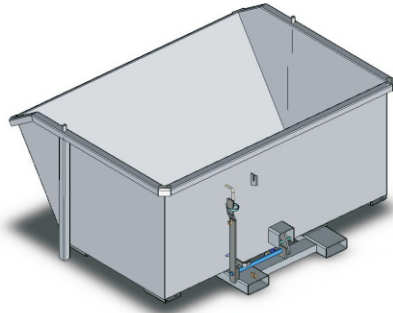
- Pocket size 165 x 65mm
- Pocket Centres – 635mm
- Safe Working Load 1000kg
- Unit Weight – 200kg
- Volume Capacity – 0.75cu m
- HCG 800mm
- VCG 400mm
- Crane Lugs, Wheels & Lid Optional
- Drain Valve & Strainer Optional
- Hydraulic Option available



Type NS-TU15 Heavy Duty Tip-Up Bin

The type NS-TU15 Heavy Duty Tip-Up Bin has been manufactured from 3mm plate and designed with a low profile to allow versatility in confined spaces. The pouring lip and smooth formed edges make the bin ideal for all food industry applications. The release mechanism is activated by the Forklift operator pulling the pull chord from the driver's seat. The custom built shock absorber prevents impact forces being transmitted to the Forklift during emptying.

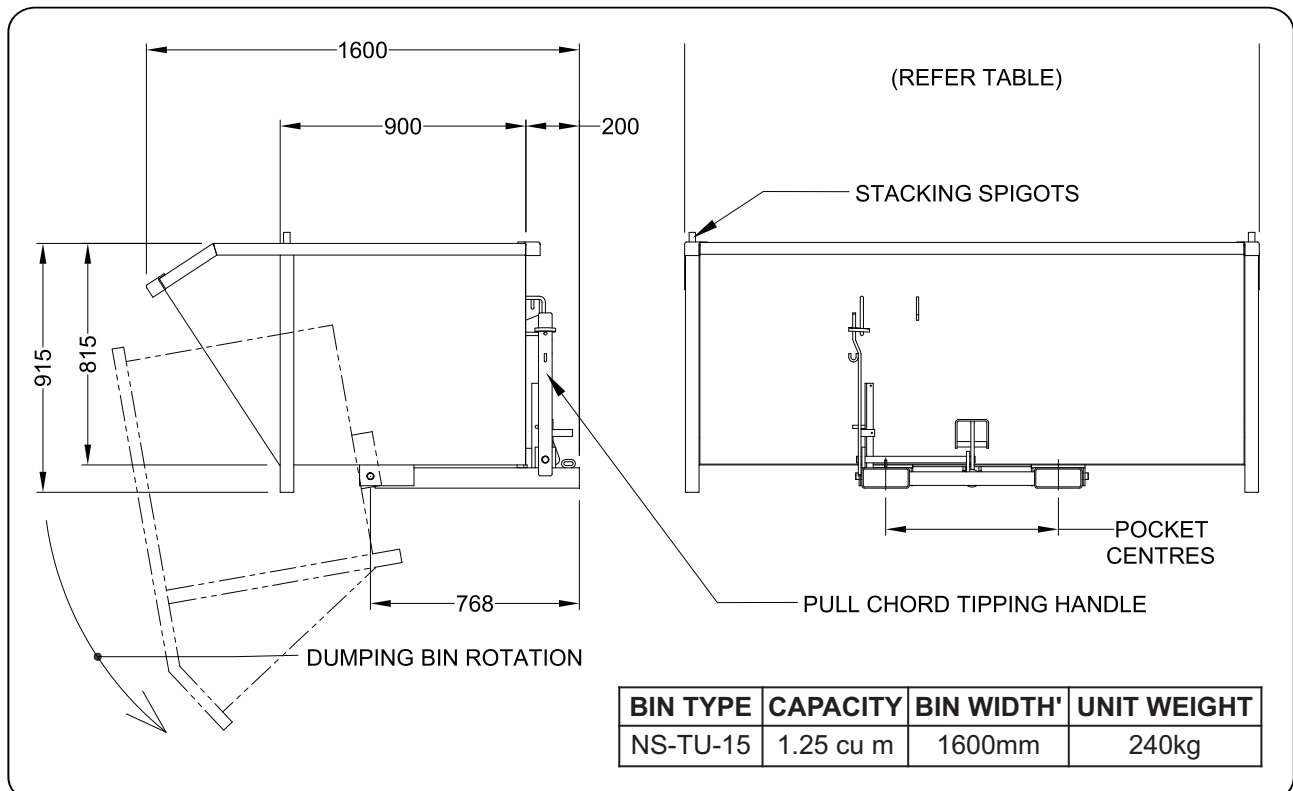
All type NS-TU bins have a Safe Working Load of 1000kg and range in sizes from 0.5 – 1.5 cubic metre capacities. These bins are available in either enamel painted over primed steel or H.D. Galvanised finish.



(Type NS-TU15 standard model shown)
Refer 'NS-TU_WL_Sales' Product Specification sheet
for Wheels & Crane Lug options.

SPECIFICATIONS:

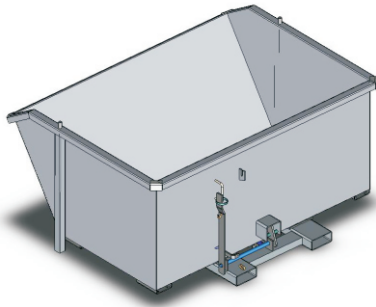
- Pocket size 165 x 65mm
- Pocket Centres – 635mm
- Safe Working Load 1000kg
- Unit Weight – 240kg
- Volume Capacity – 1.25cu m
- HCG 800mm
- VCG 400mm
- Crane Lugs, Wheels & Lid Optional
- Drain Valve & Strainer Optional
- Hydraulic Option available



Type NS-TU18 Heavy Duty Tip-Up Bin

The type NS-TU18 Heavy Duty Tip-Up Bin has been manufactured from 3mm plate and designed with a low profile to allow versatility in confined spaces. The pouring lip and smooth formed edges make the bin ideal for all food industry applications. The release mechanism is activated by the Forklift operator pulling the pull chord from the driver's seat. The custom built shock absorber prevents impact forces being transmitted to the Forklift during emptying.

All type NS-TU bins have a Safe Working Load of 1000kg and range in sizes from 0.5 – 1.5 cubic metre capacities. These bins are available in either enamel painted over primed steel or H.D. Galvanised finish.



(Type NS-TU18 standard model shown)
Refer 'NS-TU_WL_Sales' Product Specification sheet for Wheels & Crane Lug options.

SPECIFICATIONS:

- Pocket size 165 x 65mm
- Pocket Centres – 635mm
- Safe Working Load 1000kg
- Unit Weight – 260kg
- Volume Capacity – 1.50cu m
- HCG 800mm
- VCG 400mm
- Crane Lugs, Wheels & Lid Optional
- Drain Valve & Strainer Optional
- Hydraulic Option available

